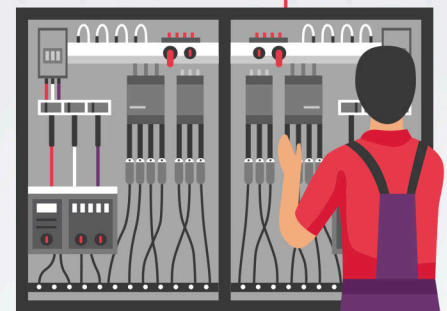
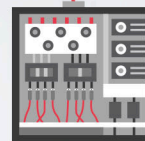


SENSIBLE LOTO KITS (ELECTRICAL)



**A LOTO KIT
FOR EVERY
JOB**



ELECTRICAL LOTO KIT STEEL CABINET - MEDIUM

MODEL NO. LOKT-ESC6-401



| SL. No. | Description | Image | Qty | SL. No. | Description | Image | Qty |
|---------|--|-------|-------|---------|--|-------|-------|
| 1. | Lockout / Tagout Station with Clear Fascia. Color: Yellow. Dimensions: 360 x 450 x 155mm. Model No: LS-6CFY-EB | | 1 Pc. | 19. | Circuit Breaker Locking Device for MCCB with small toggles, Grip Tight. Color: Red. Size: SMALL. Material: Die-Casting Aluminium Alloy & Nylon ABS and Metal Spray. Size: L 83mm x W 23mm. Model No: CB-MST-4093 | | 1 Pc. |
| 2. | LOTO Bag - Belt Pouch. Color: Red. Brand: LOK-FORCE™. Size: 20.5 x 10 x 14 cms. Model No: BG-RD21BP | | 1 Pc. | 20. | Circuit Breaker Locking Device for MCCB's with Tall and Wide Toggles. Color: Red. Size: LARGE. Material: Die-Casting Aluminium Alloy & Nylon ABS and Metal Spray. Size: 85 x 30 x 27 mm. Model No: CB-MST-4091 | | 1 Pc. |
| 3. | Hasp – Aluminium Round Rod Scissor hasp. With Non-conductive Black coating and Injection Molded Nylon Handle. Size: 25 mm. (SMALL). Color: Red. Brand: LOTO-LOK®. Model No: HSP-AL-25 | | 1 Pc. | 21. | Cable Lockout - Economy Squeezer Multipurpose, Galvanized Steel Cable PVC coated with Brass End Cap. Cable Length: 1.5 Mtr. Cable Diameter: 4.0mm. Brand: LOTO-LOK®. Model No: CL-SQCL-1.5MR | | 1 Pc. |
| 4. | Hasp – Aluminium Round Rod Scissor hasp. With Non-conductive Black coating and Injection Molded Nylon Handle. Size: 38 mm. (LARGE). Color: Red. Brand: LOTO-LOK®. Model No: HSP-AL-38 | | 1 Pc. | 22. | Panel Lockout - Push Button / Switch, Polycarbonate material. Color: Transparent. Inner Size: 58 x 58 mm. Brand: LOTO-LOK®. Model No: PL-SQS-50 | | 1 Pc. |
| 5. | Hasp – Nylon, Non Conductive, Color: Red, 6 locks capacity. Size: 5.0 mm Shackle diameter. Brand: LOTO-LOK®. Model No: HSP-RNH-65 | | 1 Pc. | 23. | Panel Lockout - Push Button Emergency. Polycarbonate material. Color: Transparent. Inner Size: 70mm x H85mm. Brand: LOTO-LOK®. Model No: PL-EPB-90 | | 1 Pc. |
| 6. | Hasp – Nylon, Di-Electric, Yellow / Red color with 4 locks capacity. Size: 3.0 mm Shackle diameter. Brand: LOTO-LOK®. Model No: HSP-DEY3 | | 1 Pc. | 24. | Panel Lockout - Push Button. Cover size: 62mm Dia x 54mm H. Fits 27 ~ 32mm. Hole diameter push buttons. Model No: PL-AD-2732 | | 1 Pc. |

| SL. No. | Description | Image | Qty | SL. No. | Description | Image | Qty |
|---------|---|-------|--------|---------|--|-------|---------|
| 7. | Circuit Breaker Locking Device Pin Combo (SET OF 3) for Miniature Circuit Breaker. 1 off PIN – IN, 1 off PIN – OUT & 1 off PIN – OUT – WIDE. Brand: LOTO-LOK®. Model No: CB-COMBO-CTBL | | 2 Sets | 25. | Switch Lockout Device – Panel Lockout with Adhesive Base. Color: Yellow. Immobilises cabinet doors & Covers Key Holes. Model No: MPD-YBPL-28 | | 1 Pc. |
| 8. | Circuit Breaker Locking Device, PIN-OUT for Single & Multipole MCB's w/ LATCH. Color: Yellow. Brand: LOTO-LOK®. Model No: CB-POL-Y | | 3 Pcs. | 26. | 3-PTP (Three Point Traceability Padlock). Color: Red. SS304 Grade Regular Shackle 40mm. Body: Nylon PA66 Construction. Key Different (2 Unique Keys per Lock). Brand: LOTO-LOK®. Model No: 3PTPRKDR40 | | 2 Pcs. |
| 9. | Circuit Breaker Locking Device for Single & Multi Pole MCB's & MCCB's. Opened and Closed with Screwdriver. Color: Yellow. Brand: LOTO-LOK®. Model No: CB-MG-CTBL | | 5 Pcs. | 27. | 3-PTP (Three Point Traceability Padlock). Color: Red. Body: Nylon PA66 material. Shackle: Nylon PA66 extruded over SS304 DUAL PURPOSE (Electrical & Mechanical use), Non-Conductive (DUO 2in1), Rust, Shock & Weatherproof. Key Different (2 Unique Keys per Lock). Regular Shackle 40mm. Brand: LOTO-LOK®. Model No: 3PTPRKDN40 | | 6 Pcs. |
| 10. | Circuit Breaker Locking Device for Single and Multi Pole MCB's & MCCB's. Opened and Closed with Screwdriver. Color: Blue. Brand: LOTO-LOK®. Model No: CB-AB-CTBL | | 1 Pc. | 28. | 3-PTP (Three Point Traceability Padlock). Color: Red. SS304 Grade Long Shackle 80mm. Body: Nylon PA66 Construction. Key Different (2 Unique Keys per Lock). Brand: LOTO-LOK®. Model No: 3PTPRKDL80 | | 1 Pc. |
| 11. | Circuit Breaker Locking Device, Universal type for Single & Multipole MCB's & MCCB's upto 200A, Hand Tightening, No-Tool. Color: Red. Brand: LOQ-IT. Model No: CB-UNI-HT | | 2 Pcs. | 29. | 3-PTP (Three Point Traceability Padlock). Color: Red. Body: Nylon PA66 material. Shackle: Nylon PA66 extruded over SS304 DUAL PURPOSE (Electrical & Mechanical use), Non-Conductive (DUO 2in1), Rust, Shock & Weatherproof. Key Different (2 Unique Keys per Lock). Long Shackle 80mm. Brand: LOTO-LOK®. Model No: 3PTPRKDN80 | | 1 Pc. |
| 12. | Circuit Breaker Locking Device, Universal type with Dove Tail for locking a wide range of MCCB's upto 200Amps, Hand Tightening, No-Tool. Color: Red. Brand: LOQ-IT. Model No: CB-UNI-DTHT | | 2 Pcs. | 30. | DANGER TAG, " DO NOT OPERATE ". Material: PVC. Size: L 143 mm x W 80 mm x 0.5 mm thk. Model No: S1 – TAGD – 01 | | 10 Pcs. |
| 13. | Circuit Breaker / Fuse Lockout, Screwdriver Required, Color: Red. Model No: CB-FLRD | | 2 Pcs. | 31. | DANGER TAG, " DO NOT OPERATE ". Material: PVC. Size: L 160 mm x W 80 mm x 0.5 mm thk. Model No: S1 – TAGD – 222 | | 10 Pcs. |
| 14. | Circuit Breaker Locking Device - Universal Type for Single & Multipole MCB's & MCCB's upto 200A with cover and 2 Way Padlocking slots. Color: Red. Model No: CB-COV94 | | 2 Pcs. | 32. | TAG, Yellow color. " OUT OF SERVICE, NOT TO BE OPERATED ". Material: PVC. Size: L 160 mm x W 80 mm x 0.5 mm thk. Model No: S1 – TAGC – 301 | | 5 Pcs. |
| 15. | Circuit Breaker Locking Device for Single Pole Miniature Circuit Breaker. Color - Red. Opened and closed with screwdriver. Brand: LOTO-LOK®. Model No: CB-UB-CTBL | | 5 Pcs. | 33. | Screwdriver. Model No: TOOL-SCD | | 1 Pc. |
| 16. | Circuit Breaker Locking Device for Schneider MCCB's with Multiple Padlocking Facility. Steel Construction. Model No: STL-CTBL | | 2 Pcs. | 34. | Marker Pen. Color: Black. Model No: LSP-MARKER | | 1 Pc. |
| 17. | Circuit Breaker Locking Device, Lockouts 277 Volts MCCB's with toggle Width 16mm x 11.5mm Thickness. Thumbwheel Operation. Size: Small, Color: Red. Brand: LOQ-IT. Model No: CB-KT-S | | 2 Pcs. | 35. | Cable Ties, 8" Length for Tie Tags. Model No: LSP-CABLETIE | | 25 Pcs. |
| 18. | Circuit Breaker Locking Device, Lockouts 480/600 Volts MCCB's with toggle Width 41mm x 13.5mm Thickness. Thumbwheel Operation. Size: Medium, Color: Red. Brand: LOQ-IT. Model No: CB-KT-M | | 1 Pc. | | | | |