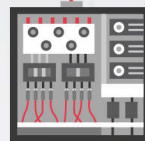


SENSIBLE LOTO KITS (ELECTRICAL)



**A LOTO KIT
FOR EVERY
JOB**



LOTO ELECTRICAL KIT - MICRO

MODEL NO. LOKT-ELMC-101



SL. No.	Description	Image	Qty	SL. No.	Description	Image	Qty
1.	LOTO BAG - Belt Pouch. Color: Red. Brand: LOK-FORCE™. Size: 20.5 x 10 x 14 cms. Model No: BG-RD21BP		1 Pc.	10.	Circuit Breaker Locking Device, Lockouts 277 Volts MCCB's with toggle Width 16mm x 11.5mm Thickness. Thumbwheel Operation. Size: Small, Color: Red. Brand: LOQ-IT. Model No: CB-KT-S		1 Pc.
2.	Hasp - Steel, PE Injection Molded Handles, Color: Red. Size: 25mm. Small, 6 locks capacity. Brand: LOTO-LOK®. Model No: HSP-PMH-25R		1 Pc.	11.	3-PTP (Three Point Traceability Padlock). Body: Nylon PA66 material. Shackle: Nylon PA66 extruded over SS304 DUAL PURPOSE (Electrical & Mechanical use), Non-Conductive (DUO 2in1), Rust, Shock & Weatherproof. Color: Red. Key Different (2 Unique Keys per Lock). Regular Shackle 40mm. Brand: LOTO-LOK®, Model No: 3PTPRKDN40		2 Pcs.
3.	Hasp - Nylon, Non Conductive, Color: Red, 3 locks capacity. Size: 3.0 mm Shackle diameter. Brand: LOTO-LOK®. Model No: HSP-RNH-33		1 Pc.	12.	DANGER TAG, " DO NOT OPERATE ". Material: PVC. Size: L 143 mm x W 80 mm x 0.5 mm thk. Model No: S1 - TAGD - 01		5 Pcs.
4.	Hasp, Nylon, Di-Electric, Yellow / Red color with 4 locks capacity. Size: 6.0 mm Shackle diameter. Brand: LOTO-LOK®. Model No: HSP-DEY6		1 Pc.	13.	DANGER TAG, " DO NOT OPERATE ". Material: PVC. Size: L 160 mm x W 80 mm x 0.5 mm thk. Model No: S1 - TAGD - 222		3 Pcs.
5.	Circuit Breaker Locking Device, PIN-OUT for Single & Multipole MCB's. Color: Yellow. Brand: LOTO-LOK®. Model No: CB- PO-CTBL		1 Pc.	14.	TAG, Yellow color. " OUT OF SERVICE, NOT TO BE OPERATED ". Material: PVC. Size: L 160 mm x W 80 mm x 0.5 mm thk. Model No: S1 - TAGC - 301		2 Pcs.
6.	Circuit Breaker Locking Device for Single Pole Miniature Circuit Breaker. Color - Red. Opened and closed with screwdriver. Brand: LOTO-LOK®. Model No: CB-UB-CTBL		1 Pc.	15.	Screwdriver. Model No: TOOL-SCD		1 Pc.
7.	Circuit Breaker Locking Device, PIN-OUT for Single & Multipole MCB's w/ LATCH. Color: Yellow. Brand: LOTO-LOK®. Model No: CB-POL-Y		1 Pc.	16.	MARKER PEN. Color: Black. Model No: LSP-MARKER		1 Pc.
8.	Circuit Breaker Locking Device for Single & Multi Pole MCB's & MCCB's. Opened and Closed with Screwdriver. Color: Yellow. Brand: LOTO-LOK®. Model No: CB-MG-CTBL		1 Pc.	17.	Cable Ties, 8" Length for Tie Tags. Model No: LSP-CABLETIE		10 Pcs.
9.	Circuit Breaker Locking Device, Universal type for Single & Multipole MCB's & MCCB's upto 200A, Hand Tightening, NO-TOOL. Color: Red. Brand: LOQ-IT. Model No: CB-UNI-HT		1 Pc.				